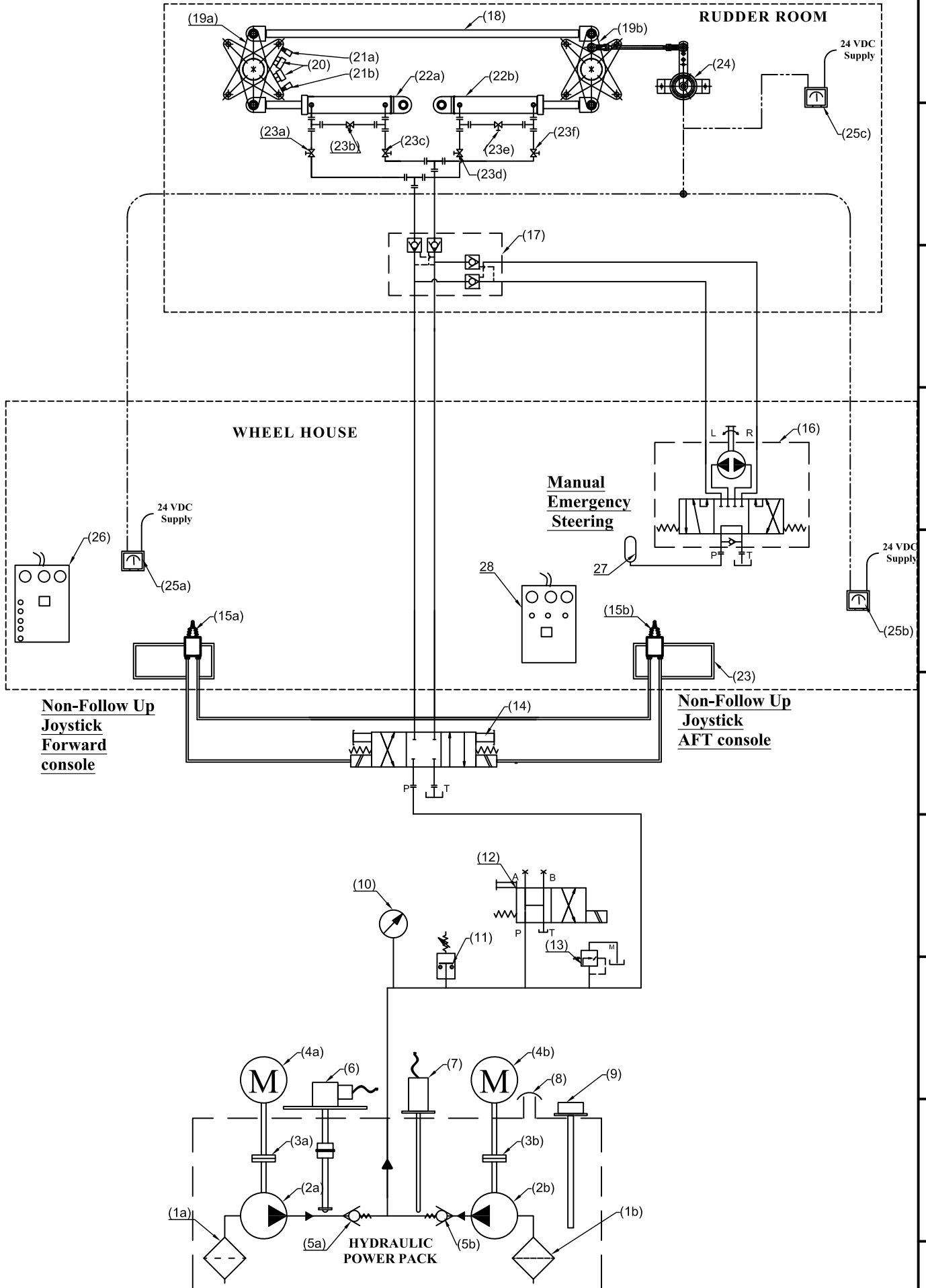


Dual Station Electro-Hydraulic Gear Circuit :JumboZ-1500



**MAC ♦ N ♦ HOM SYSTEMS
KOCHI - 20**

DESIGNATION
Electro-Hydro. Circuit
JumboZ - 1500 - Double Station

DWG. No.
MHS-1552B

DATE
07.01.2023

A

B

C

D

E

F

G

H

ELECTRO-HYDRAULIC CIRCUIT SYSTEM PARAMETERS

1) Pump Capacity:

Discharge : 12 lpm
Max. Pressure : 200 kg/cm²

2) Hydraulic Cylinder

Operating Pressure : 70 kg/cm²
Relief Valve Set Pressure : 87.5 kg/cm²

3) Helm Steering Wheel

Diameter : 686 mm (27")

4) Seamless Steel Tube

**Material : Carbon Steel,
Cold Drawn, Normalised &
Pickled Tube**

Specification : EN 10305-4
Diameter : 16 mm
Thickness : 2 mm

5) Hydraulic Cylinder

Model : JumboZ-1500
Stroke : 440 mm
Ram : 45 mm x 2

6) Hydraulic Hose:

Grade : R1
I.D : $\frac{1}{2}$ "

7) Electric Motor

5 HP, 50 Hz, 1440 rpm, 3Phase

8) Emergency Helm Pump

Discharge : 80 cc/rev

SL. No.	DESCRIPTION
1a,1b	SUCTION STRAINER
2a,2b	HYDRAULIC PUMP
3a,3b	FLEXIBLE COUPLING
4a,4b	ELECTRIC MOTOR
5a,5b	NON-RETURN VALVE
6	OIL LEVEL SENSOR
7	OIL TEMP. SENSOR
8	FILLER BREATHER
9	OIL LEVEL GAUGE
10	PRESSURE GAUGE
11	PRE.SWITCH.LOW PRE.ALARM
12	UNLOADING VALVE
13	PR.RELIEF VALVE
14	SOL. OPRTD. DIRECTIONAL CONTROL VALVE
15a,15b	JOYSTICK CONTROL
16	EMERGENCY HYDRAULIC PUMP
17	DOUBLE CHECK VALVE
18	CONNECTION ROD(CUSTOMER SUPPLY)
19a,19b	TILLER ARM
20	MECHANICAL STOPPER (customer supply)
21a,21b	LIMIT SWITCHES
22a,22b 23a,23b,23c	HYD. ACTUATOR- JumboZ-1500
23d,23e,23f	ISOLATION VALVES
24	RUDDER ANGLE SENSOR
25a,25b, 25c	RUDDER ANGLE INDICATORS
26	STEERING PANEL WITH ALARM
27	Oil Reservoir
28	Steering Control Panel



MAC ♦ N ♦ HOM SYSTEMS
KOCHI - 20

DESIGNATION

DWG. No.

DATE

Electro-Hydro. Circuit JumboZ-1500
for Dual Station (Page 1 of 2)

MHS-1552B
(Page 2 of 2)

07.01.2023

A

B

C

D

E

F

G

H